

# DSRIP DY5 Master Participation Agreements

*Behavioral Health*

*September 19, 2019*

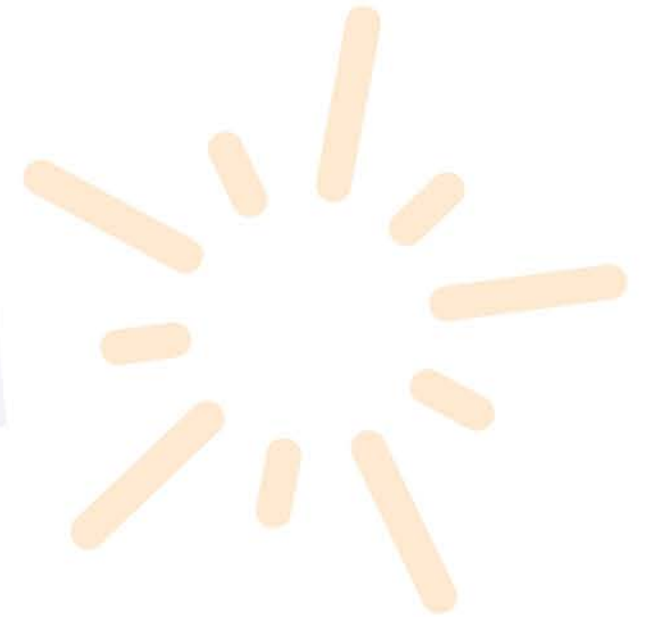


# Housekeeping

- ✦ **Please DO NOT place your phone on “HOLD”**
- ✦ **Please keep your phone line muted**
- ✦ **This webinar is being recorded**
- ✦ **We have planned time for questions at the end**
- ✦ **Please submit your questions using the chat feature in GoToMeeting**
- ✦ **These slides and the recorded webinar will be distributed after the webinar and posted on our website**

# Agenda

- ✦ About the DY5 MPA
- ✦ Incentive Components
- ✦ Next Steps
- ✦ Q&A



A light blue curved line starts from the bottom left and curves upwards towards the right. At the end of this line is a starburst graphic composed of several orange, elongated rectangular bars radiating outwards.

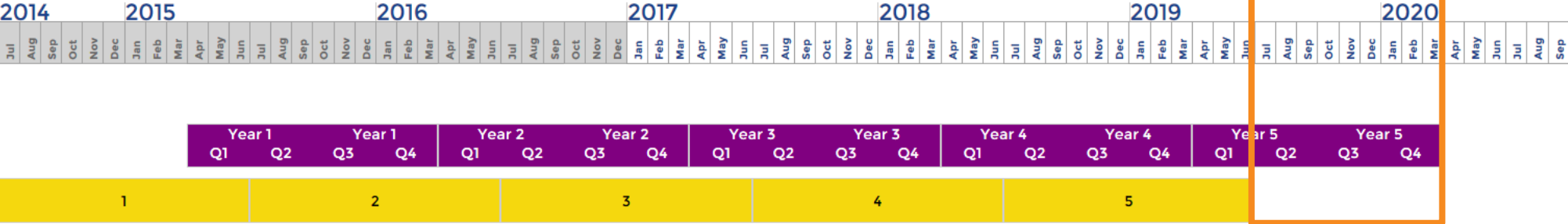
# About the DY5 MPA

# DSRIP Calendar

This year's contract period corresponds to the remainder of DSRIP Demonstration Year 5 (DY5):  
**July 1, 2019 through March 31, 2020**

**MPA  
Period:  
Rest of  
DY5**

July 1,  
2019–  
March 31,  
2020



**Demonstration Year (DY)**

**Measurement Year (MY)**

# DY5 MPA Contracting Timeline

Date	Activity
September 19, noon	MPA kickoff webinar for behavioral health partners
September 24, 2PM	MPA kickoff webinar for post-acute partners
Week of Sept. 23	Millennium mails amendments, exhibits, and billing templates Relationship managers distribute electronic versions of billing templates
Late October	Deadline for partners to object to amendment (30 days from mailing)

# DY5 MPA Allocations

Provider Type	DY5 Base MPA Allocation %	DY5 Base MPA Allocation \$	MY5 Base MPA Allocation %	MY5 Base MPA Allocation \$
Primary Care	44%	\$4,620,000	44%	\$6,600,000
Behavioral Health	26%	\$2,730,000	26%	\$3,900,000
Hospitals	21.5%	\$2,257,500	21.5%	\$3,225,000
Skilled Nursing Facilities	5%	\$525,000	5%	\$750,000
Home Care Agencies	2%	\$210,000	2%	\$300,000
Maternal & Child Health	1.5%	\$157,500	1.5%	\$225,000
<b>TOTAL</b>	<b>100%</b>	<b>\$10,500,000</b>	<b>100%</b>	<b>\$15,000,000</b>

# DY5 MPA Allocations, *cont.*

Provider Type	Size Scale		
Primary care, pediatric, and family practices	Based on number of Medicaid lives	Extra Large	10,000+
		Large	5,000–9,999
		Medium	1,000–4,999
		Small	200–999
		Under 200	< 200
Behavioral health organizations	Based on Medicaid claims and audited financials	Large	2,000+
		Medium	1,000–1999
		Small	< 1,000
Hospitals	Based on number of beds and revenue	Large	500+
		Medium	125–499
		Small	<150
Skilled nursing facilities	Based on number of beds and revenue	Large	200–300+
		Medium	150–199
		Small	<150
Home care agencies	Based on number of counties served	Large	6–8
		Medium	3–5
		Small	1–2



# MPA Financial Concepts

- ✦ Allocation of funds by provider type was determined based on the following factors:
  - Number of deliverables
  - Complexity of deliverables
  - Number of total providers within each category



# Incentive Components

# DY5 Incentive Components

Provider Type	Engagement & Reporting ("ER")	Transformation ("T")	Transformation with Performance ("P")
Behavioral Health Outpatient (S, M) The Resource Center	15%	20%	65%
Behavioral Health Outpatient (L)	20%	25%	55%
Behavioral Health Inpatient	25%	0%	75%
Behavioral Health Pediatric	30%	0%	70%
Behavioral Health Outpatient (substance use only)	15%	15%	70%
Horizon Village	5%	35%	60%

# Differences from DY4/MY5

## Added

- ✦ Compensation & Benefits survey
- ✦ Social determinants of health conference and webinar
- ✦ High utilizer management and outreach program
- ✦ After-hours BH workgroup

## Retained

- ✦ Workforce reporting
- ✦ Patient engagement
- ✦ 7- and 30-day follow-up measures (outpatient)
- ✦ Mental health follow-up (inpatient)
- ✦ Substance use follow-up (inpatient)

## Changed

- ✦ CVD/diabetes monitoring and screening: lab scripts and onsite blood draws
- ✦ Substance use treatment measures apply to SU-only providers

# Engagement and Reporting Deliverables

Category	Description
PPS engagement	<ul style="list-style-type: none"><li>• Meet with relationship manager at least twice</li></ul>
Workforce	<ul style="list-style-type: none"><li>• Submit staffing impact data via HWapps (October 15 and April 15)</li><li>• Complete Compensation &amp; Benefits Survey (due October 4, 2019)</li></ul>
Social determinants of health conference	<ul style="list-style-type: none"><li>• Participate in pre-conference webinar (October 15, 2019)</li><li>• Attend conference (November 6, 2019)</li></ul>
Self-reported data via SurveyMonkey	<ul style="list-style-type: none"><li>• Patient engagement (medical health screenings) – no patient list required</li><li>• 7- and 30-day follow-up</li><li>• Mental health and substance use follow-up</li><li>• Substance use treatment initiation and engagement</li></ul>

# Social Determinants of Health Conference

- ✦ Wednesday, November 6, 2019
  - 9AM–3PM
  - Buffalo Grand Hotel (formerly Adam's Mark)
- ✦ All healthcare and community-based organization partners are invited
- ✦ Mission: To bring together CBOs, managed care organizations, and clinical partners to establish value-based partnerships to address social determinants of health



# Social Determinants of Health (SDOH) Conference and Webinar

- ✦ Summary: Participate in pre-conference webinar (Oct. 15, 2019) and attend conference (Nov. 6, 2019)
- ✦ Objective: To connect clinical providers with community-based organizations (CBOs) that address SDOH; to encourage conversations around VBP arrangements and potential partnerships
- ✦ Deliverables:
  - Webinar attendance will be tracked by Millennium
  - Conference attendees will need to upload “passport” showing evidence of visits with at least three CBOs
- ✦ Applies to: Outpatient behavioral health organizations

# SDOH Conference, *cont.*

## Why plan to attend?

- ✦ Keynote speaker
  - Denard Cummings, Director of the Bureau of Social Determinants of Health, NYS Dept. of Health
- ✦ Panel presentation on VBP
  - Hear from organizations which have made a difference by targeting specific SDOH (including community-based organizations and managed care organizations)
  - Facilitated by Milano Harden of The Genius Group, Inc.
- ✦ Community-Based Organization (CBO) Showcase
  - Meet CBO representatives at exhibit tables and learn first-hand about organizational capabilities; key services; value proposition and ultimately, why they may be the VBP partner you've been looking for to achieve your social needs goals!



# Hospital Utilization (BH After-Hours Workgroup)

- ✦ Objective: Reduce avoidable hospital utilization
- ✦ Deliverables:
  - Attend Millennium-facilitated workgroup meetings
  - Develop comprehensive listing of after-hours, urgent care, and crisis services available
  - Develop referral recommendations and workflows
  - Develop community marketing and education plan
  - Review/report on agency-specific and regional hospital utilization trends
  - Recommend regional best practices for patient management
- ✦ Applies to:
  - BestSelf
  - ECMC BH (outpatient)
  - Endeavor
  - Horizon Health
  - Niagara Falls Memorial Medical Center BH (outpatient)
  - Spectrum

# Hospital Utilization (High Utilizer Management)

- ✦ Summary:
- ✦ Objective: Reduce avoidable hospital utilization
- ✦ Deliverables:
  - Develop policy and workflow for managing high utilizers (by 12/1/19)
  - Select 50% of patients from Millennium-provided high utilizer list to target\*
  - Successfully complete outreach to at least 50% of patients selected
- ✦ Applies to:
  - Buffalo Psychiatric Center (outpatient)
  - Cattaraugus Co. Dept. of Community Services
  - Chautauqua Co. Mental Hygiene Dept.
  - Niagara Co. Dept. of Mental Health and Substance Abuse Services
  - The Resource Center BH

# Outpatient Mental Health Performance Measures

Measure	Performance Threshold
Follow-up at outpatient mental health facility <b>7 days</b> following behavioral health inpatient discharge	<ul style="list-style-type: none"><li>• Must maintain compliance rate at or above MY5 results or achieve <math>\geq 60\%</math></li></ul>
Follow-up at outpatient mental health facility <b>30 days</b> following behavioral health inpatient discharge	<ul style="list-style-type: none"><li>• Must maintain compliance rate at or above MY5 results or achieve <math>\geq 80\%</math></li></ul>
Prescribe and/or perform bloodwork for patients requiring CVD and diabetes monitoring and screening	<ul style="list-style-type: none"><li>• Identify patients who need testing from PSYCKES</li></ul>
	<ul style="list-style-type: none"><li>• Provide scripts to at least 25% of patients requiring labwork</li></ul>
	<ul style="list-style-type: none"><li>• Provide onsite blood draws for at least 25% of patients requiring labwork</li></ul>

# Outpatient Substance Use Performance Measures

Measure	Performance Threshold
<p>Substance Use Treatment <b>Initiation</b>: Appointment completion rate for patients with substance use issues discharged from an inpatient unit.</p> <p>Patient must have a scheduled follow-up appointment at a substance use outpatient facility within 14 days.</p>	<ul style="list-style-type: none"><li>• Must maintain compliance rate at or above MY5 results or achieve <math>\geq 60\%</math></li></ul>
<p>Substance Use Treatment <b>Engagement</b>: Number of patients engaged in ongoing substance use treatment.</p> <p>Patient must have 3 visits (including initiation visit if applicable) within 48 days following inpatient discharge.</p>	<ul style="list-style-type: none"><li>• Must maintain compliance rate at or above MY5 results or achieve <math>\geq 30\%</math></li></ul>

# Substance Use Treatment

## Example #1

- ✦ Discharge date: Jan. 1
- ✦ Initiation visit: Jan. 8 **1**
- ✦ Engagement visits:
  - January 25 **2**
  - February 1 **3**

**Initiation** - yes

**Engagement** - yes

## Example #2

- ✦ Discharge date: Jan. 1
- ✦ No visit within 14 days
- ✦ Engagement visits:
  - January 25 **1**
  - February 1 **2**
  - March 1 **3**

**Initiation** - no

**Engagement** - yes

## Example #3

- ✦ Discharge date: Jan. 1
- ✦ Initiation visit: Jan 8 **1**
- ✦ Engagement visits:
  - January 25 **2**
  - June 1

**Initiation** - yes

**Engagement** - yes

# Substance Use Treatment, *cont.*

## Example #1

- ✦ Discharge date: Jan. 1
- ✦ Initiation visit: Jan. 8
- ✦ Engagement visits:
  - January 25
  - February 1

## Example #2

- ✦ Discharge date: Jan. 1
- ✦ No visit within 14 days
- ✦ Engagement visits:
  - January 25
  - February 1
  - March 1

### **Initiation:**

Denominator: 3 patients  
Numerator: 2 patients (#1, #3)

### **Engagement:**

Denominator: 3 patients  
Numerator: 2 patients (#1, #2)

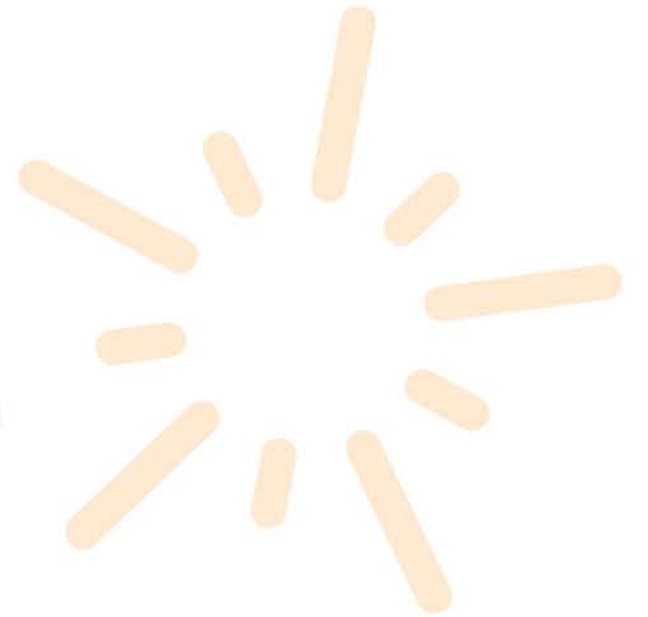
## Example #3

- ✦ Discharge date: Jan. 1
- ✦ Initiation visit: Jan 8
- ✦ Engagement visits:
  - January 25
  - June 1

# Inpatient Performance Measures

Measure	Performance Threshold
<b>Mental health follow-up:</b> Appointment with mental health facility (within 7 days of discharge)	<ul style="list-style-type: none"><li>Secure appointments for at least 85% of patients</li></ul>
<b>Substance use follow-up:</b> Appointment with substance use clinic (within 14 days of discharge)	<ul style="list-style-type: none"><li>Secure appointments with at least 80% of patients</li></ul>

# Next Steps





# Upcoming Communications

- ✦ Additional MPA kickoff webinars:
  - Post-acute September 24, 2019 (2:00 PM)
- ✦ Amendment, exhibit, billing template
  - Paper copies will be mailed to your organization next week
- ✦ Billing templates
  - Electronic versions of your billing templates will be emailed to you by your relationship manager
- ✦ Reporting Parameters
  - Are being updated and will be distributed by relationship managers
- ✦ *Critical Deadlines*
  - Monthly newsletter will continue around the first of each month to let you know what is due and how to submit it

# Next Steps

- ✦ Amendment automatically goes into effect 30 days from mailing date
- ✦ Millennium relationship managers will follow up with your specific organizations to provide support as needed
- ✦ Updated OMIG compliance documentation will be requested in January 2020

# Overview of Important Dates

Item	Due Date(s)	Platform
Workforce Compensation & Benefits Survey	Oct. 4, 2019	Email (to Rural AHEC)
SDOH pre-conference webinar	Oct. 15, 2019	Webinar
Biannual workforce staffing impact report	Oct. 15, 2019 April 15, 2020	HWapps
Monthly self-reported performance data	15 <sup>th</sup> of each month starting Oct. 15, 2019	SurveyMonkey
Quarterly self-reported performance data	Oct. 15, 2019 Jan. 15, 2020 April 15, 2020	SurveyMonkey
SDOH conference	Nov. 6, 2019	Conference
Compliance certification documentation	January 2020	Email (to Laura Fleming)

# Questions?



*[www.millenniumcc.org](http://www.millenniumcc.org)*

Find Millennium on social media:

